

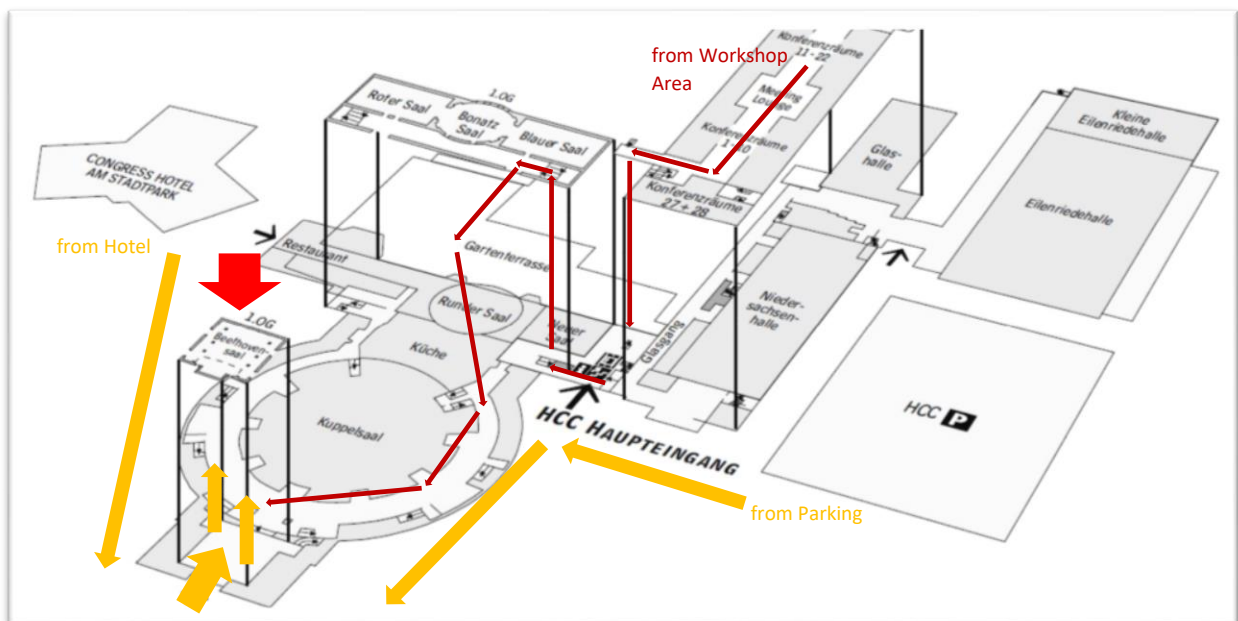


Floor Plan

This document helps you find the session rooms.

Leibniz Saal

This room was formerly named "Beethoven Saal".



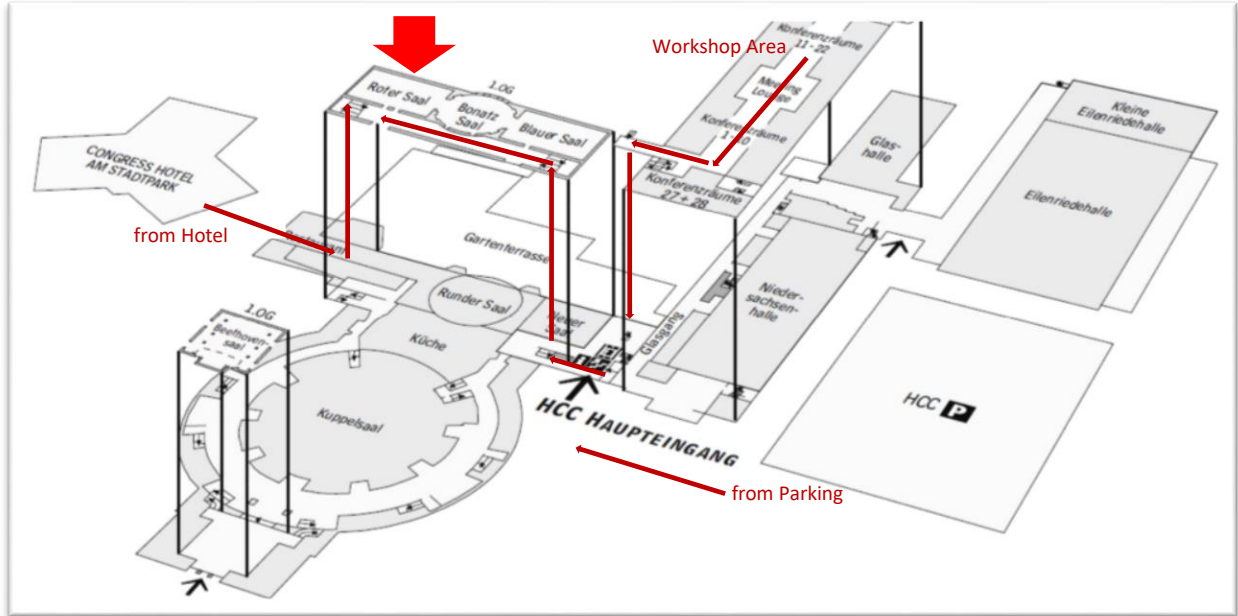
Leibniz Saal hosts the joined session on day 1 in the morning. It is also used on day 1 in the afternoon for Track 4.

We all come back to Leibniz Saal at the end of day 1 to take off to the evening event at the Zoo Hannover.

Roter Saal

Roter Saal is used on day 2 and day 3, and hosts Track 5.

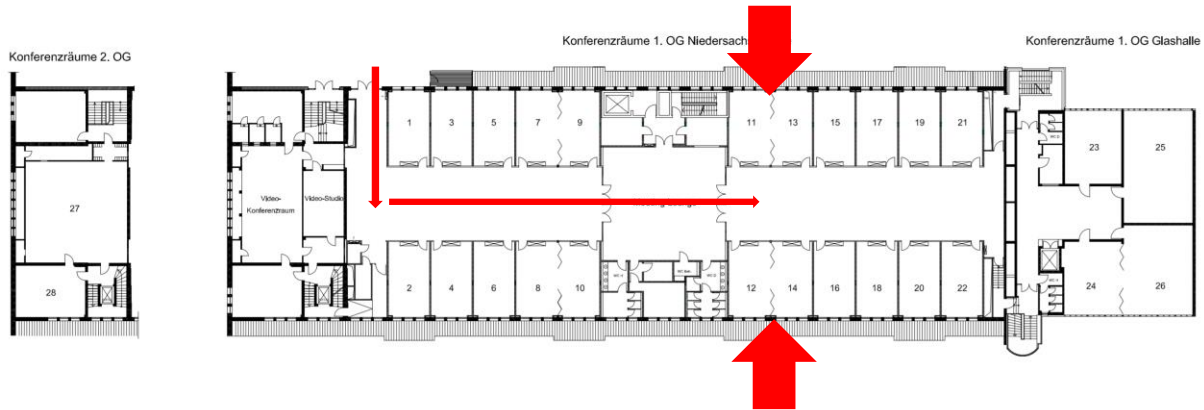
Both the Workshop Area and "Roter Saal" are located on the first floor, but in different adjacent buildings. There is no direct passage. You need to get down to ground level to switch buildings.



There will be signs guiding you from the Workshop Area to "Roter Saal".

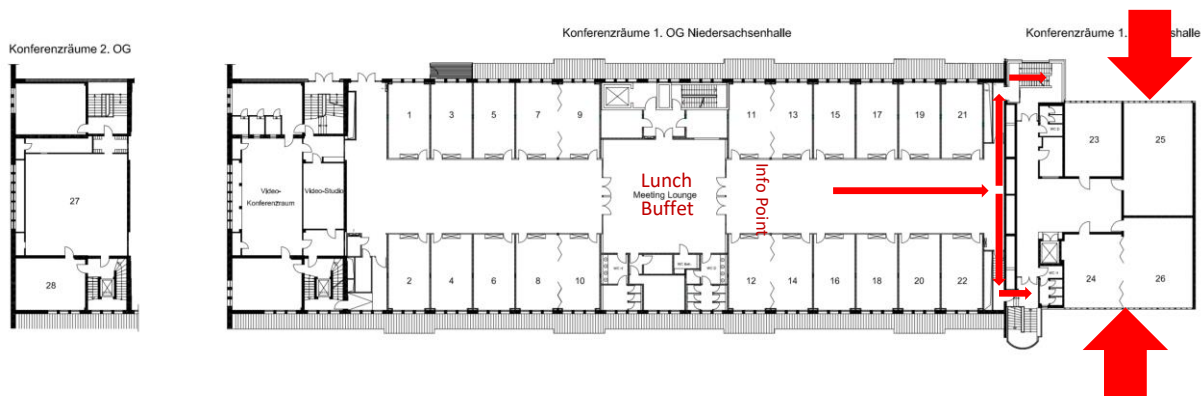
Rooms 11, 12, 13, 14

Rooms 11+13 hosts Track 1, and rooms 12+14 host Track 2. They are located in the Workshop Area:



Rooms 24, 25, 26

Rooms 14+26 host Track 3, and room 25 hosts Track 4. They are accessible via a staircase at the end of the Workshop Area:



Lunch & Info Point

The lunch buffet takes place every day from 12:00h to 13:00h in the "Meeting Lounge" in the center of the Workshop Area.

The Info Point is located in the Workshop Area Foyer and staffed during conference hours.